

## EN SUMMARY

|   |    |
|---|----|
| GENERAL MACHINE OPERATING RULES.....                          | 24 |
| TECHNICAL DATA.....   | 24 |
| MACHINE PARTS .....   | 25 |
| MACHINE INSTALLATION AND START-UP .....                       | 26 |
| MAKING AN ESPRESSO .....                                      | 28 |
| SUGGESTIONS.....  | 28 |
| MAKING BREWED COFFEE.....                                     | 29 |
| SUGGESTIONS.....  | 29 |
| PROGRAMMING THE QUANTITIES.....                               | 30 |
| PROGRAMMING THE TEMPERATURE.....                              | 31 |
| CLEANING AND MAINTENANCE .....                                | 32 |
| SUGGESTIONS.....  | 32 |
| DESCALING.....  | 33 |
| DESCALING - PROBLEM - CAUSE - SOLUTION .....                  | 35 |
| WARRANTY LIMITATIONS .....                                    | 35 |
| DISPOSAL OF THE PRODUCT IN ACCORDANCE WITH EC DIRECTIVE ..... | 36 |
| WARNINGS - STATUS - MACHINE.....                              | 37 |
| PROBLEM - CAUSE - SOLUTION .....                              | 38 |

## GENERAL MACHINE OPERATING RULES


Read the instruction manual and the warranty limitations carefully. The machine must be connected to a properly grounded power outlet. The machine must be kept clean by frequently washing the cup holders, the drip tray, the used capsule tray and the water tank. Maintenance must be carried out with the machine off.

**IMPORTANT: Never immerse the machine or its removable components in water or put it in the dishwasher.**

The water in the tank must be replaced regularly. Do not use the appliance without water in the tank. It is advisable to use a descaler specifically designed for espresso machines at least once every 2 months following the instructions found in the chapter on DESCALING. The machine is equipped with a valve allowing to maintain constant pressure, which may cause some water to drip from the brew group.

## TECHNICAL DATA Mod. 641

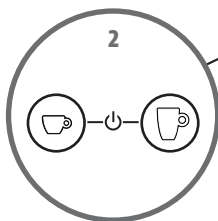
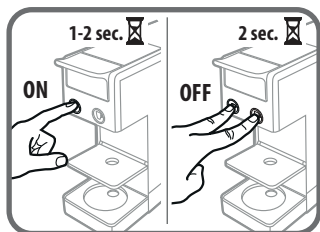
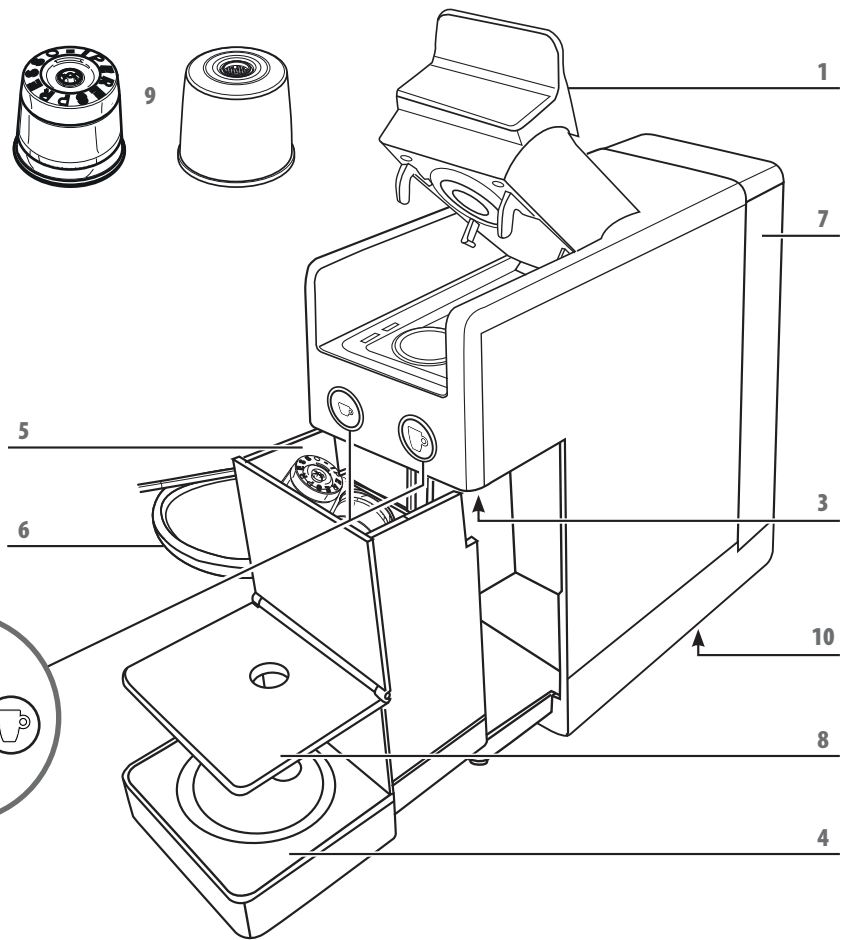
Body material: ABS  
Heat exchanger material: aluminium  
Water tank capacity: 0.750 litres  
Used capsule tray: 7 capsules  
Pump: 19 bar  
Weight without packaging: 3.4 Kg  
Power: 220-240V, 50-60Hz; 127V - 60Hz (BRA)  
Power: 850W with "Power save" function  
Dimensions (W x D x H) (mm): 100x298x254

Capitani  Piazza IV Novembre 1 - SOLBIATE CON CAGNO (CO)  
The manufacturer reserves the right to make changes or improvements without prior notice.

**ONLY USE IPERESPRESSO CAPSULES WITH THIS MACHINE.  
DISCOVER AND BUY ILLY IPERESPRESSO CAPSULES AT SHOP.ILLY.COM,  
AT THE SHOPS OR AUTHORISED ILLY CAFÉS OR CALL THE FREEPHONE  
NUMBER 800-821021 (ONLY FROM ITALY).**

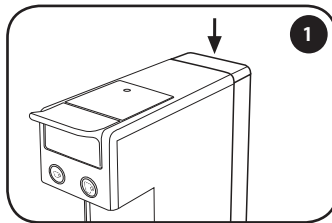
# MACHINE PARTS

- 1 CAPSULE COMPARTMENT OPENING/CLOSING LEVER
- 2 BREW BUTTONS:
  - ☕ > ESPRESSO COFFEE
  - ☕ > BREWED COFFEE
- 3 COFFEE DISPENSING SPOUT
- 4 MUG HOLDER SURFACE
- 5 REMOVABLE USED CAPSULE TRAY
- 6 POWER CORD
- 7 WATER TANK
- 8 ESPRESSO CUP HOLDER SURFACE
- 9 IPERESPRESSO CAPSULES:
  - ☕ > FOR ESPRESSO COFFEE
  - ☕ > FOR BREWED COFFEE
- 10 DATA PLATE (UNDER BASE)

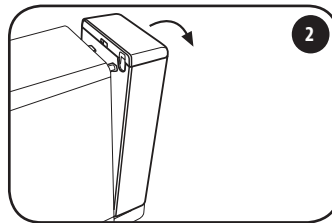


## EN MACHINE INSTALLATION AND START-UP

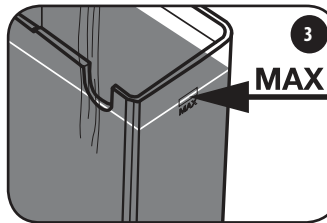
When used for the first time, or if the machine has been turned off for a long period of time, wash the tank before filling it. Furthermore it is recommended to dispense at least 3 mugs of water to rinse the internal machine circuits, proceeding as follows.



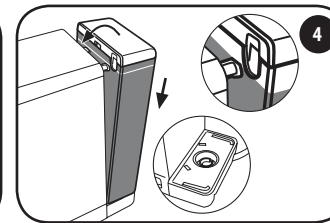
Remove the tank, pushing it downwards.



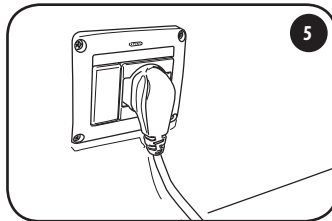
Turn the tank outwards.



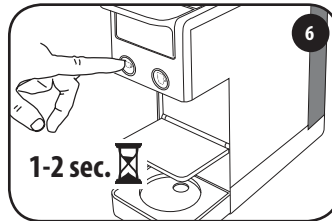
Fill the tank with fresh water to the maximum level.



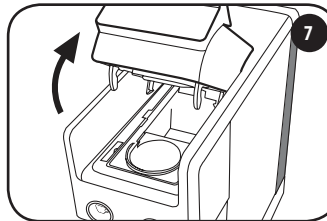
Attach the tank containing the descaling solution.  
Make sure that the tank is completely engaged.



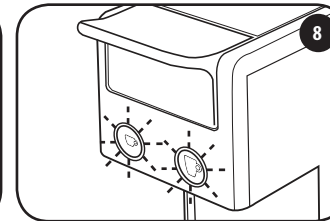
Connect the machine to the power outlet.



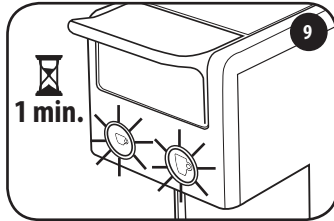
Turn on the machine by pressing one of the two coffee buttons for 1-2 sec.



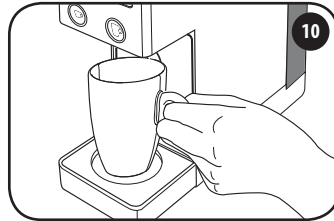
Make sure there are no capsules in the machine.



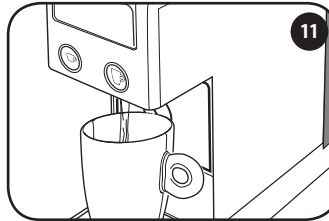
The ☕ and 🧼 buttons will start to flash.



After approx. 1 minute, they will turn on fixed and the machine is ready to be used.



Place an empty mug below the dispenser.



Press the ☞ or ☞ button and wait until the water stops dispensing. The machine is rinsed when at least 3 mugs of water have been dispensed. The machine is now ready for use.

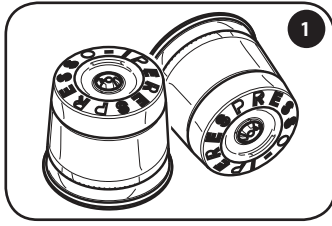
**Power Save function**

If the machine remains on and it not used, the Power Save function activates after 15 minutes and the ☞ and ☞ buttons turn off.

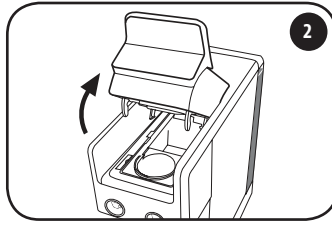
To reactivate the machine, press one of the two buttons and wait for them to turn on fixed. The machine is now ready for use.

If the machine will not be used for a long period of time, turn off the machine, unplug it from the power outlet and empty the water tank.

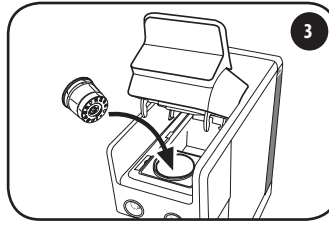
## EN MAKING AN ESPRESSO



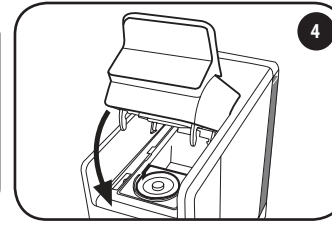
Use the illy capsules shown in the figure.



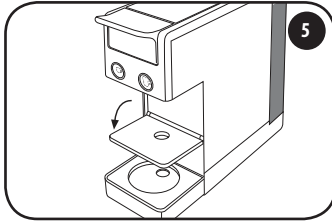
Slowly lift (to the stop) the lever that opens/closes the capsule compartment.



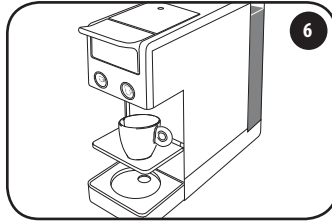
Insert the capsule as shown in the figure.



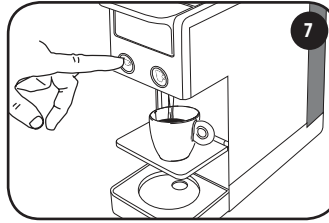
Close the lever completely.



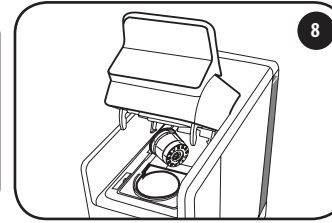
Lower the cup support grid. Fill the tank with fresh drinking water.



Place an espresso cup below the dispenser.



Press and release the ☞ button. The machine will stop dispensing automatically.



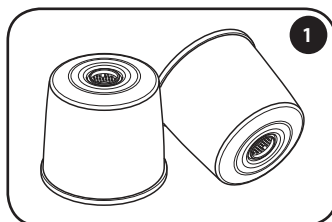
To eject the used capsule, slowly lift the lever and the capsule will be automatically collected in the specific container. If the capsule is not ejected, repeat the operation.

### SUGGESTIONS

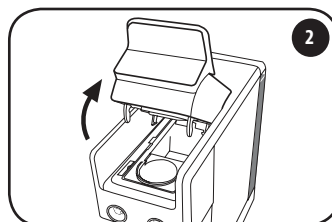
To enjoy a high quality espresso remember to:

- Use the capsule for espresso with the ☞ button. If the incorrect capsule/button combination is used, repeat the operation correctly.
- Change the water in the tank every day.
- Use water with a total hardness of less than 12 French degrees to reduce scaling in the machine;
- Use thick and preheated cups to prevent the coffee from cooling down too fast. The cups can be heated by rinsing them with hot water.

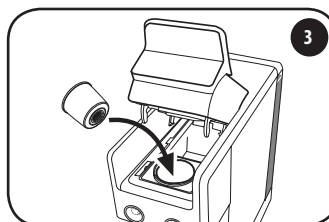
## MAKING BREWED COFFEE



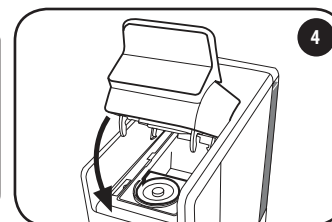
Use the illy capsules shown in the figure.



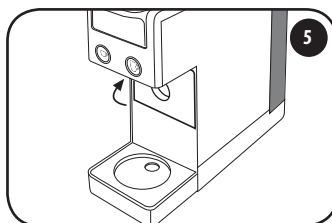
Slowly lift (to the stop) the lever that opens/ closes the capsule compartment.



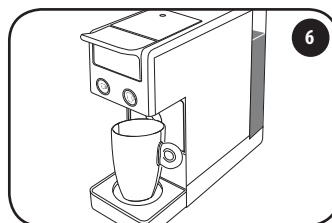
Insert the capsule as shown in the figure.



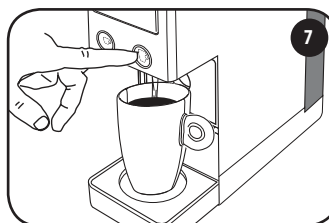
Close the lever completely.



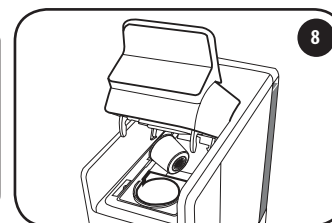
Move the cup support grid to the vertical position. Fill the tank with fresh drinking water.



Place a large cup or mug below the dispenser.



Press and release the ☕ button. The machine will stop dispensing automatically.



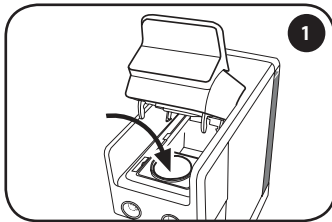
To eject the used capsule, slowly lift the lever and the capsule will be automatically collected in the specific container. If the capsule is not ejected, repeat the operation.

## SUGGESTIONS

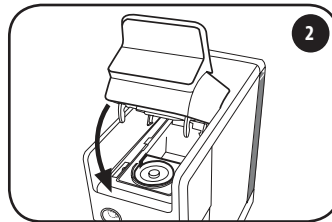
To enjoy a high quality espresso remember to:

- Use the capsule for espresso with the ☕ button. If the incorrect capsule/button combination is used, repeat the operation correctly.
- Change the water in the tank every day.
- use water with a total hardness of less than 12 French degrees to reduce scaling in the machine;
- Use thick and preheated cups to prevent the coffee from cooling down too fast. The cups can be heated by rinsing them with hot water.

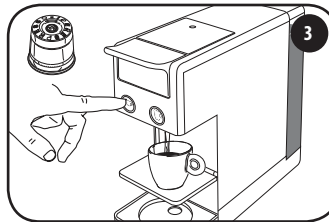
## EN PROGRAMMING THE QUANTITIES



Put a capsule in the provided space.

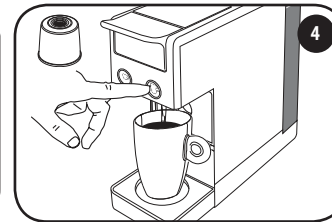


Close the lever completely.



### Programming espresso:

Use the capsule shown in the figure. Press and hold the ☕ button, the machine will start to dispense coffee. Release the button once the desired quantity is reached.



### Programming brewed coffee:

Use the capsule shown in the figure. Press and hold the ☕ button. The machine will start delivering coffee. Release the button once the desired quantity is reached.

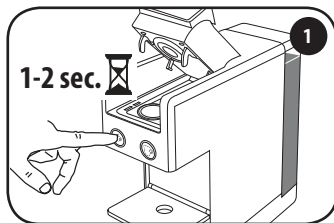
| Factory settings |  |                |     |
|------------------|--|----------------|-----|
| Button           | Capsule  | Quantity       | Cup |
|                  | <br>Espresso:<br>medium roast,<br>dark roast,<br>decaf | approx. 25 ml  |     |
|                  | <br>Long espresso<br>(blue capsule)                    | approx. 50 ml  |     |
|                  | <br>Brewed coffee                                      | approx. 220 ml |     |

The machine is now programmed. The next time the ☕ or ☕ button is pressed, the machine will dispense the quantity of coffee that was just stored.

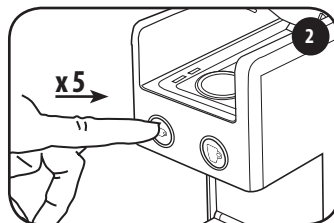
### HOW TO COME RETURN THE MACHINE TO THE FACTORY SETTINGS:

With the lever open, turn on the machine by pressing one of the two coffee buttons for 1-2 sec.  
Press the ☕ button 5 times within 15 seconds.  
The ☕ and ☕ buttons will flash quickly for 2 seconds and will then turn on fixed.  
Now the machine has returned to the factory settings for both preparations, both for the quantity as well as the temperature.

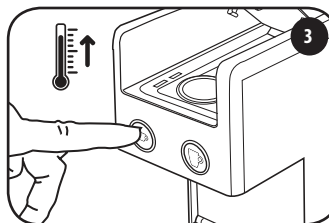
# PROGRAMMING THE TEMPERATURE



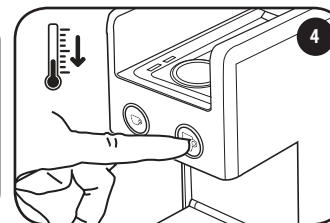
With the lever open, turn on the machine by pressing one of the two coffee buttons for 1-2 sec. Do not insert a capsule.



Press the ☞ button 5 times within 15 seconds of turning on the machine. Both buttons will flash. It is now possible to change the temperature as described in points 3 and 4.



Press the ☞ button to increase the temperature. The ☞ button flashes. Both buttons flash after approx. 3 seconds.



Press the button ☞ to decrease the temperature. The ☞ button flashes. Both buttons flash after approx. 3 seconds.

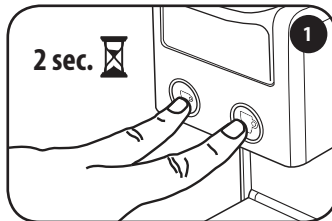
The machine is now programmed. The next time the ☞ or ☞ button is pressed, the coffee is dispensed at the temperature that was just stored.



**HOW TO COME RETURN THE MACHINE TO THE FACTORY SETTINGS:**

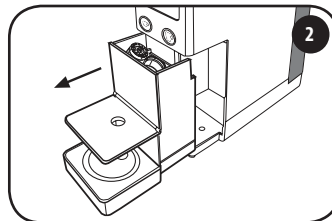
With the lever open, turn on the machine by pressing one of the two coffee buttons for 1-2 sec.  
Press the ☞ button 5 times within 15 seconds.  
The ☞ and ☞ buttons will flash quickly for 2 seconds and will then turn on fixed.  
Now the machine has returned to the factory settings for both preparations, both for the quantity as well as the temperature.



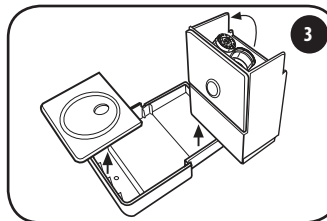
## EN CLEANING AND MAINTENANCE



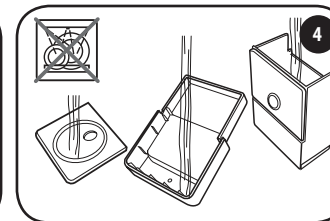
Switch off the machine by pressing the two coffee   keys simultaneously for 2 seconds.



Remove the capsule holder. The capsule holder can contain a maximum of 7 capsules. Therefore it should be emptied regularly to prevent the capsules from getting stuck.



Empty the capsule holder and rinse it. Clean the tray and grid of residual water and coffee. Once clean, engage the tray in the grid.



Rinse the components under running water and dry them. Do not wash the components in the dishwasher.

### SUGGESTIONS

- If the machine is not being used, turn it off and unplug it from the power outlet.
- Store the capsule coffee machine in a dry place, away from dust and out of the reach of children.
- It is recommended to put the machine in its original packaging.
- The storage temperature must not be lower than 5°C, to avoid the internal machine parts from being damaged due to the water freezing.
- To ensure correct hygiene and maintain high product quality, it is advisable to expel the capsule immediately after the coffee is dispensed.

## DESCALING

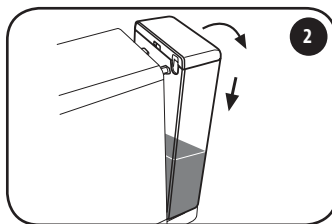
If the dispensing buttons ☞ and ☞ flash alternately, the machine must be descaled. Read all instructions carefully before performing the descaling in order to familiarise yourself with the process. The cycle lasts about 8 minutes.

**N.B.:** If the operations are not carried out according to the indicated time, the machine will not start the descaling process. In this case, turn off the machine and repeat the steps from the beginning.

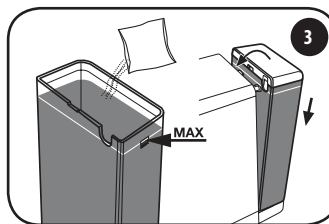
Limescale accumulation is a normal result of machine use. The machine has an automatic program that helps optimise cleaning and removes scale deposits from the interior. If the descaling procedure is not carried out, scale may cause malfunctions that are not covered by the warranty. Use only descaling products for coffee machines. Do not use vinegar, lye, salt or formic acid as they damage the machine. Follow the procedure described below and not the instructions on the package of the descaling solution.



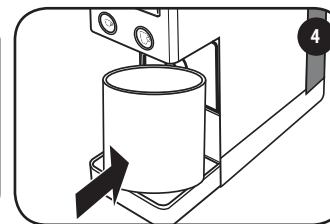
Close the lever, do not insert any capsule. Switch off the machine by pressing the two coffee ☞ ☞ keys simultaneously for 2 seconds.



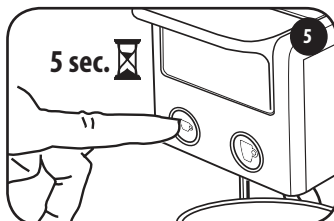
Remove the tank and empty the remaining water.






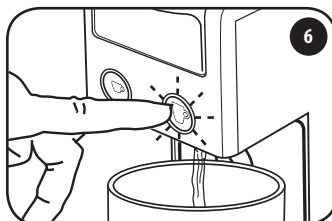
Fill the tank with fresh water to the maximum level and let the descaling solution dissolve. Attach the tank containing the descaling solution.





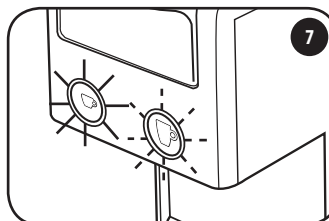
Place a container of at least 0.75 litre capacity under the dispensing spout.





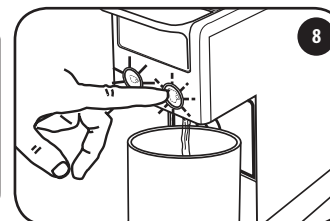
Turn on the machine by pressing the button  for 5 seconds.  
After 5 seconds the button  will start flashing. Release the button .




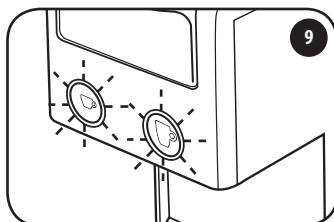
The  button flashes.  
Press the button  to start the descaling cycle.  
The machine begins dispensing water.





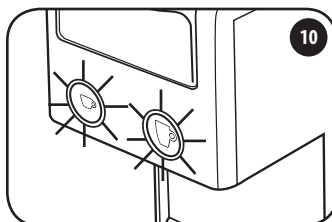
At the end of the descaling cycle, the button  is steady on while the button  is flashing.  
Remove the container and empty it.  
Wash the tank thoroughly and fill it with fresh water.  
Attach the tank containing fresh water (see point 3).

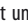



Place a container of at least 0.75 litre capacity under the dispensing spout.  
Press the  button to start the rinse cycle. The machine begins dispensing water.



At the end of the rinse cycle, the button  and the button  flash simultaneously.  
Remove the container and empty it.



Wait until the button  and the button  become steady on.  
The machine is now ready for use.

## DESCALING - PROBLEM - CAUSE - SOLUTION

| PROBLEM                                     | CAUSE   | SOLUTION  |
|---|---|---|
| The descaling/rinsing cycle is interrupted. | Power failure.  | When the power is restored, the cycle resumes automatically after the interruption. |
|   | The machine has been accidentally turned off.         | Turn the machine on again: the cycle resumes automatically after the interruption.  |
|   | Opening the lever when the cycle has already started. | Close the lever: the cycle resumes automatically after the interruption.            |
| The machine does not brew water.            | The water tank is empty.                              | Fill the water tank.  |

## WARRANTY LIMITATIONS

### CAUTION:

If descaling is not carried out regularly, limescale may cause malfunctions that are not covered by the warranty. Do not use vinegar, lye, salt or formic acid as they may damage the machine. Use only descaling products suitable for coffee machines. The descaling solution must be disposed of according to applicable regulations. Do not drink the liquid dispensed during the descaling process; the machine may not be used for brewing coffee until after the descaling process has terminated.

The warranty does not cover failures caused by:

- A lack of periodical descaling.
- Operation at a voltage other than what is specified on the data plate.
- Misuse or failure to follow instructions.
- Changes made internally.
- The warranty does not cover repair costs for machines that have been tampered with by unauthorised service centres. Such costs will be entirely payable by the customer.
- Do not to wash the drip tray and the used capsule tray in the dishwasher machine. Failure to follow these instructions may cause problems to both components that are not covered by the warranty.

### CAUTION:

Saving the original packaging (at least over the warranty period) is advisable in the event that the machine needs to be sent to an authorised service centre. Any damage caused due to transport without proper packaging is not covered by the warranty.

EN

## DISPOSAL OF THE PRODUCT IN ACCORDANCE WITH EC DIRECTIVE

Disposal of used electric and electronic appliances, by private persons in the European Union.

The WEEE symbol used on this product means that it must not be disposed of together with other domestic waste but must be collected separately. Consumers have the option of handing in used appliances to distributors, free-of-charge on a 1:1 basis, when they purchase a new product.

For further information about the collection of appliances to be scrapped, please contact the local authority in your town of residence, the local waste disposal service or the retailer where the product was purchased. Consumers are responsible for disposing of appliances in accordance with applicable law, and non-compliance may be subject to penalties.

The correct disposal of this product will contribute to protecting the environment, natural resources and human health.



## WARNINGS - STATUS - MACHINE

|   |  |
|---|--|
|    | <b>Both buttons flash</b><br><i>The machine has been turned on and is heating up.</i>  |
|    | <b>On fixed</b><br><i>The machine has reached the correct temperature for dispensing.</i>  |
|    | <b>The espresso button is on fixed</b><br><i>The machine is dispensing an espresso.</i>  |
|    | <b>The brewed coffee button is on fixed</b><br><i>The machine is dispensing a brewed coffee.</i>   |
|    | <b>The buttons flash alternating</b><br><i>The machine must be descaled.</i>   |
|    | <b>Slow flashing (only the brewed coffee button)</b><br><i>The machine indicates that the descaling procedure has been selected. In this condition, the tank contains the descaling solution.</i>                                |
|    | <b>Fast flashing (only the brewed coffee button)</b><br><i>The machine indicates that the first part of descaling is in progress. The machine is dispensing the descaling solution.</i>  |
|   | <b>Slow flashing (only the brewed coffee button) and the espresso button on fixed</b><br><i>The machine indicates that the first part of descaling is completed. Rinse the tank and refill it with fresh drinking water.</i>     |
|  | <b>Fast flashing (only the brewed coffee button) and the espresso button on fixed</b><br><i>The machine indicates that the second part of descaling is in progress. The machine is dispensing water for rinsing the circuit.</i> |
|  | <b>Fast flashing (only the espresso button)</b><br><i>The machine is malfunctioning. Turn off and then on again after 30 seconds. If the defect occurs again, contact an authorised service centre.</i>                          |

## EN PROBLEM - CAUSE - SOLUTION

| Problem   | Resolution   | If the problem persists            |
|---|--|------------------------------------|
| The machines does not turn on.                              | Check the socket, the plug, the voltage and that you have pressed one of the two coffee buttons for 1-2 seconds.   | Contact an authorised help centre. |
| The machine does not brew coffee.                           | The water tank is empty. Fill the water tank.<br>Tank not inserted correctly. - Insert the water tank correctly.<br>Incomplete closure of the moving part of the machine head. - Close the lever tight.<br>Pump won't start. - Dispense water without capsule and then try again with new capsule. |                                    |
| The machine makes too much noise.                           | The water tank is empty. Fill the water tank.<br>Tank not inserted correctly. - Insert the water tank correctly.   |                                    |
| Droplets of water leak from the unit after it is turned on. | It is not a problem, the machine is warming up.  |                                    |
| The machine brews coffee slowly.                            | The speed of brewing depends on the variety of coffee.<br>You're using a different type of capsule. - Check the type of capsule used.<br>There is limescale. - Run the descaling cycle.  |                                    |
| The machine brews coffee too fast.                          | The speed of brewing depends on the variety of coffee.<br>You're using a different type of capsule. - Check the type of capsule used.  |                                    |
| The coffee is cold.   | Warm up the cup.   |                                    |
| Coffee tastes sour.   | Brew a couple of cups of water.<br>Capsule expired. - Use a new capsule.   |                                    |
| The buttons flash alternately.                              | Descaling cycle required. - Run the descaling cycle.   |                                    |
| The "espresso" button flashes quickly.                      | The machine is malfunctioning. Turn off and then on again after 30 seconds.  |                                    |
| The descaling cycle does not start.                         | Descaling must be done with the machine cold.  |                                    |





## FR MESURES IMPORTANTES DE SÉCURITÉ

Lors de l'utilisation d'appareils électriques, il est nécessaire de toujours respecter les mesures de sécurité suivantes.

### Utilisation de l'appareil

Lire intégralement les instructions.

- Cet appareil ne doit être utilisé que pour un usage domestique. Toute autre utilisation doit être considérée comme inadaptée et donc dangereuse.
- Débrancher la fiche de l'installation électrique lorsque l'appareil n'est pas utilisé.
- Ne jamais toucher une surface chaude. Les distributions d'eau/café de la machine peuvent provoquer des brûlures.
- Cette machine est construite pour « faire un café expresso » : faire attention à ne pas se brûler avec des jets d'eau ou en utilisant cette machine de manière incorrecte.
- Cet appareil peut être utilisé par les mineurs à partir de 8 ans s'ils sont surveillés par un adulte ou informés de l'utilisation en toute sécurité et s'ils sont conscients des dangers qu'ils courent. Le nettoyage et l'entretien normal ne doivent être effectués par des enfants à condition qu'ils aient au moins 8 ans et soient surveillés. Garder l'appareil et le câble d'alimentation hors de portée des enfants de moins de 8 ans.
- L'appareil peut être utilisé par des personnes aux capacités physiques, sensorielles ou mentales réduites ou à l'expérience et/ou aux compétences insuffisantes si elles sont surveillées ou informées de l'utilisation en toute sécurité de l'appareil et si elles sont conscientes des dangers qu'elles courent.
- Les enfants ne doivent pas jouer avec l'appareil.
- Utiliser l'appareil exclusivement dans des lieux clos et protégés des agents atmosphériques externes.
- Pour se protéger du feu, de toutes décharges électriques ou dommages, ne pas immerger le cordon, la fiche et le corps de la machine dans l'eau ou tout autre liquide.
- Ne pas utiliser l'appareil pour des usages différents de ceux prévus.
- Ne pas poser l'appareil sur des réchauds électriques ou à gaz, ou dans un four chaud.
- L'appareil doit être allumé exclusivement pendant le temps nécessaire à son

utilisation, après quoi, il doit être éteint en appuyant simultanément pendant 2 secondes sur les deux touches café et la fiche doit être débranchée de la prise de courant.

- S'assurer que les touches café soient éteintes avant de débrancher la fiche.
- L'utilisation d'accessoires non recommandés par le fabricant peut provoquer des incendies, des décharges électriques ou des lésions aux personnes.
- Ne pas laisser le câble pendre des tables ou plans de travail. Ne pas extraire la prise en la tirant par le câble et ne pas la toucher avec les mains mouillées.
- Ne pas porter ou tirer la machine à café par le câble.
- Pour réduire le risque de blessures, ne pas laisser le câble tomber du plan de travail ou de la table car les enfants pourraient le tirer ou trébucher involontairement.
- Ne pas utiliser l'appareil si le cordon ou la fiche sont endommagés ou si la machine ne fonctionne pas correctement ou si elle a subi un quelconque dommage. Porter l'appareil à un centre d'assistance agréé en vue d'un contrôle, d'une réparation ou d'une vérification de son bon fonctionnement.
- Ne pas utiliser de rallonges ou de prises multiples. En cas d'incendie, utiliser des extincteurs à gaz carbonique (CO<sub>2</sub>). Ne pas utiliser d'eau ou des extincteurs à poudre.
- Utiliser l'appareil uniquement pour l'utilisation pour laquelle il est conçu.

### Installation de l'appareil

- Lire attentivement les instructions.
- Ne jamais installer la machine dans un environnement pouvant atteindre une température inférieure ou égale à 5°C (si l'eau gèle, l'appareil peut être endommagé) ou supérieure à 40°C.
- Vérifier que la tension du réseau électrique corresponde à celle indiquée sur la plaque signalétique de l'appareil. Ne brancher l'appareil qu'à une prise de courant convenablement mise à la terre.
- En cas d'incompatibilité entre la prise de courant et la fiche de l'appareil, faire remplacer la fiche par une autre de type adapté, par un centre d'assistance agréé.
- Positionner l'appareil au-dessus d'un plan de travail éloigné des robinets d'eau et des éviers.
- Après avoir enlevé l'emballage, s'assurer que l'appareil est en parfait état avant son installation.
- Ne pas laisser les matériels utilisés pour emballer la machine à la portée des enfants.

### Nettoyage de l'appareil

- S'assurer que les touches café soient éteintes avant de débrancher la fiche.